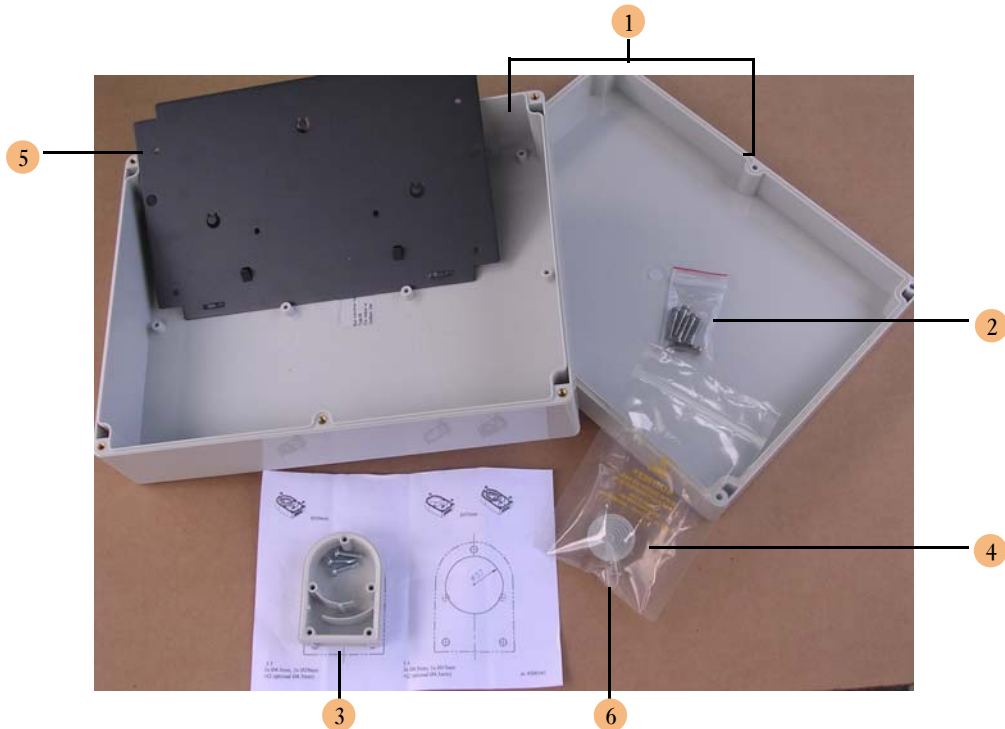


# Access Point Enclosure Installation Instructions

The enclosure for the OmniAccess AP60, and AP61 Access Point (OAW-AP60-ENCL) is an enclosure designed to provide protection for APs when deployed in environments not suitable for electronics components (dirt, moisture, etc). The enclosure does NOT protect the AP against extreme high or low temperatures and is not waterproof. The installer should refer to the appropriate device Installation Guide for operational environmental specifications. External mounting of the AP requires POE.



## Packing List

The OAW-AP60-ENCL includes:

- 1 Enclosure Housing base and top (11.75" (29.85cm) wide x 9" (22.86cm) deep x 3.5" (8.89cm) high)
  - 2 Enclosure screws (6)
  - 3 Ventilation cap, template, and screws (3)
  - 4 Cable seal
  - 5 Mounting plate (for the AP 60/61)
  - 6 Mounting plate screws (2)—typically packed with cable seal
- OAW-AP60-ENCL Installation Instructions (this guide, not pictured)

## Recommended tools



---

**CAUTION**—Be sure to follow all tool safety instructions.

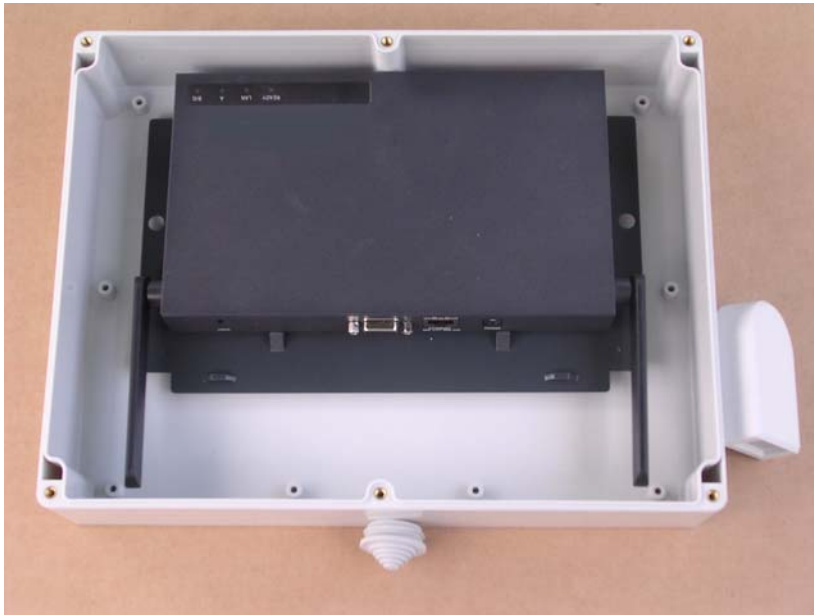
---

- Phillips head (#2) screw driver
- Sharp knife
- Drill and bits for plastic - various sizes (depends on components supplied)
- Cable tools for attaching cable connector

## Preparing the Enclosure

---

1. To determine the best location for the cable seal and ventilation cap, lay out the mounting plate with an AP aligned to the mounting plate tabs. The illustration below shows placement of the seal on the bottom and the ventilation cap on the side.



2. Remove the AP and the mounting plate.

3. Locate the cable seal on the bottom or side allowing for as direct a cable path inside the enclosure as possible while preventing moisture from entering the enclosure housing. (Here the cable seal is centered on the bottom of the enclosure.)
4. Using a sharp knife, make an X cut on the top of the cable seal to allow the network cable to penetrate the seal.
5. Measure the inside diameter of the cable seal base and drill the hole for the cable seal. Any wood or metal high-speed or hole bit will work.
6. Snap the cable seal into place.
7. Drill the holes for the ventilation cap using the template (enclosed) as a drill guide. Be sure to orient the ventilation cap to prevent moisture from entering the enclosure housing.
8. Using the three screws provided, attach the ventilation cap.
9. Orient the mounting plate into position and attach to the enclosure base with the two screws provided.
10. Push out the mounting tabs enough for the mounting holes on the back of the AP to engage and snap the AP into place.
11. Using the four screw holes on the corners of the enclosure base, attach the base in its external location.
12. Thread the raw network cable through the cable seal and into the enclosure housing.
13. Attach the end connector (RJ-45).
14. Attach the cable connector to the AP (as described in the appropriate Installation Guide).
15. Secure the enclosure cover with the six screws provided.
16. Secure the network cable from the enclosure to the WLAN switch. The network cable must be POE-enabled to supply power to the Access Point.
17. Verify that the AP is functioning properly.